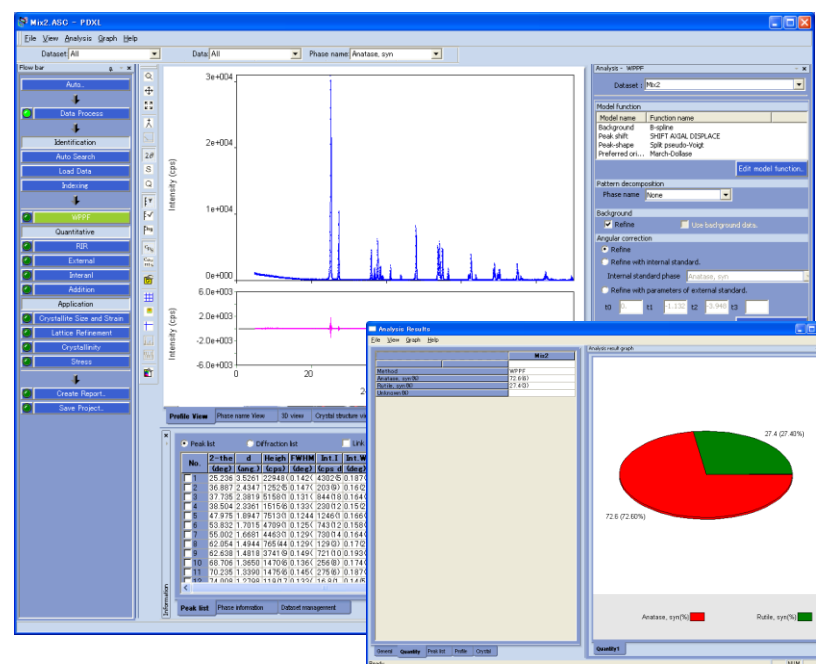
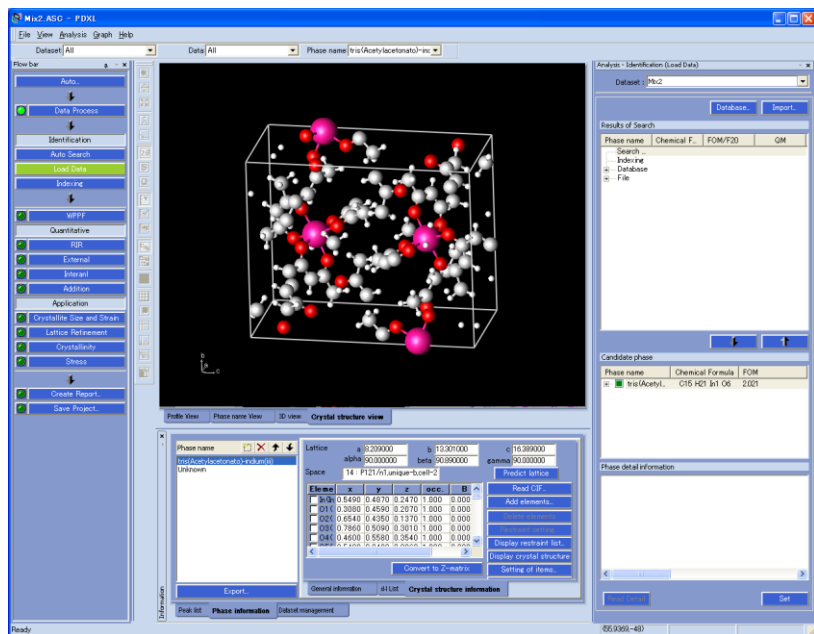
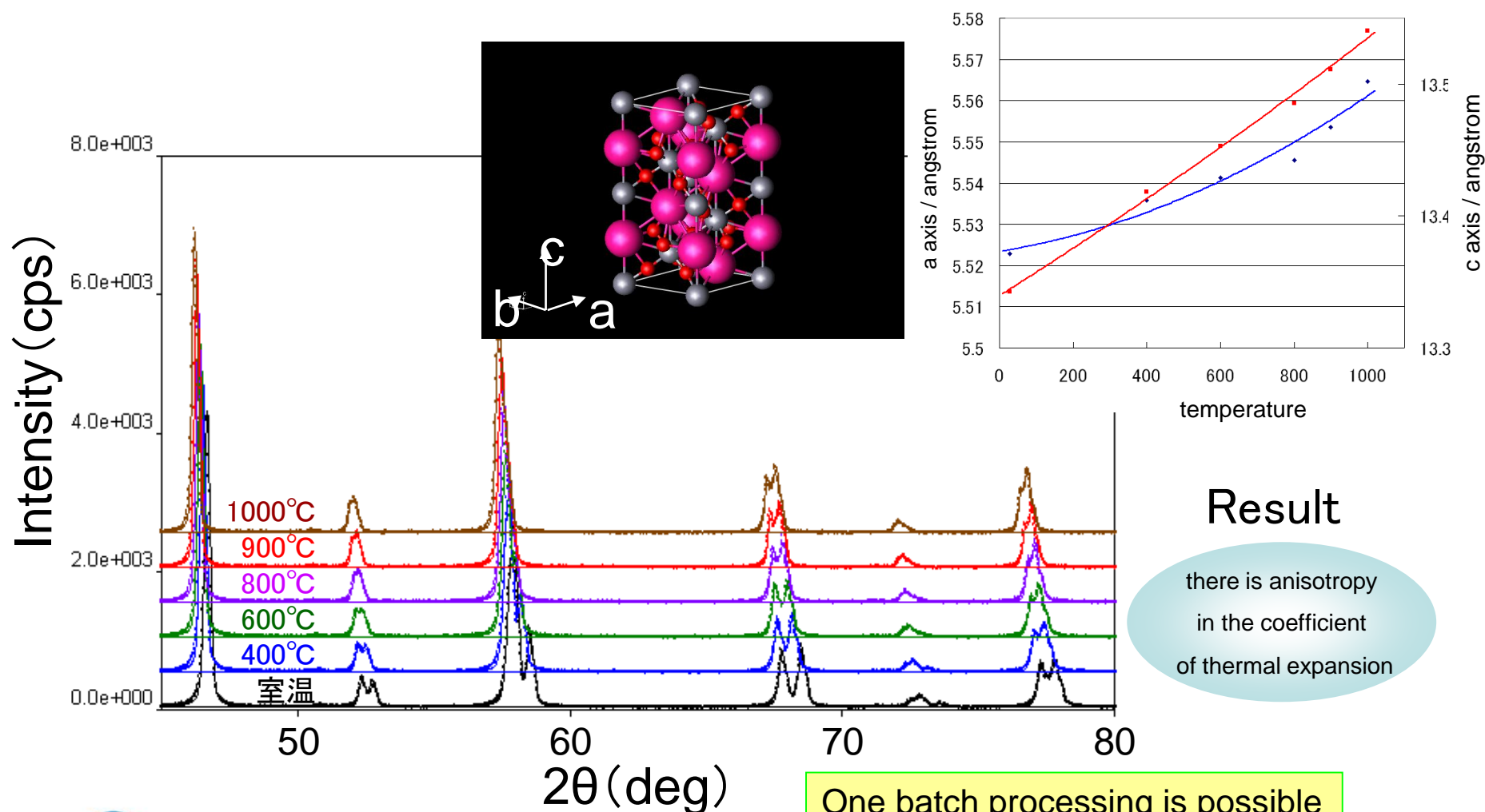


PDXL: Rietveld Analysis

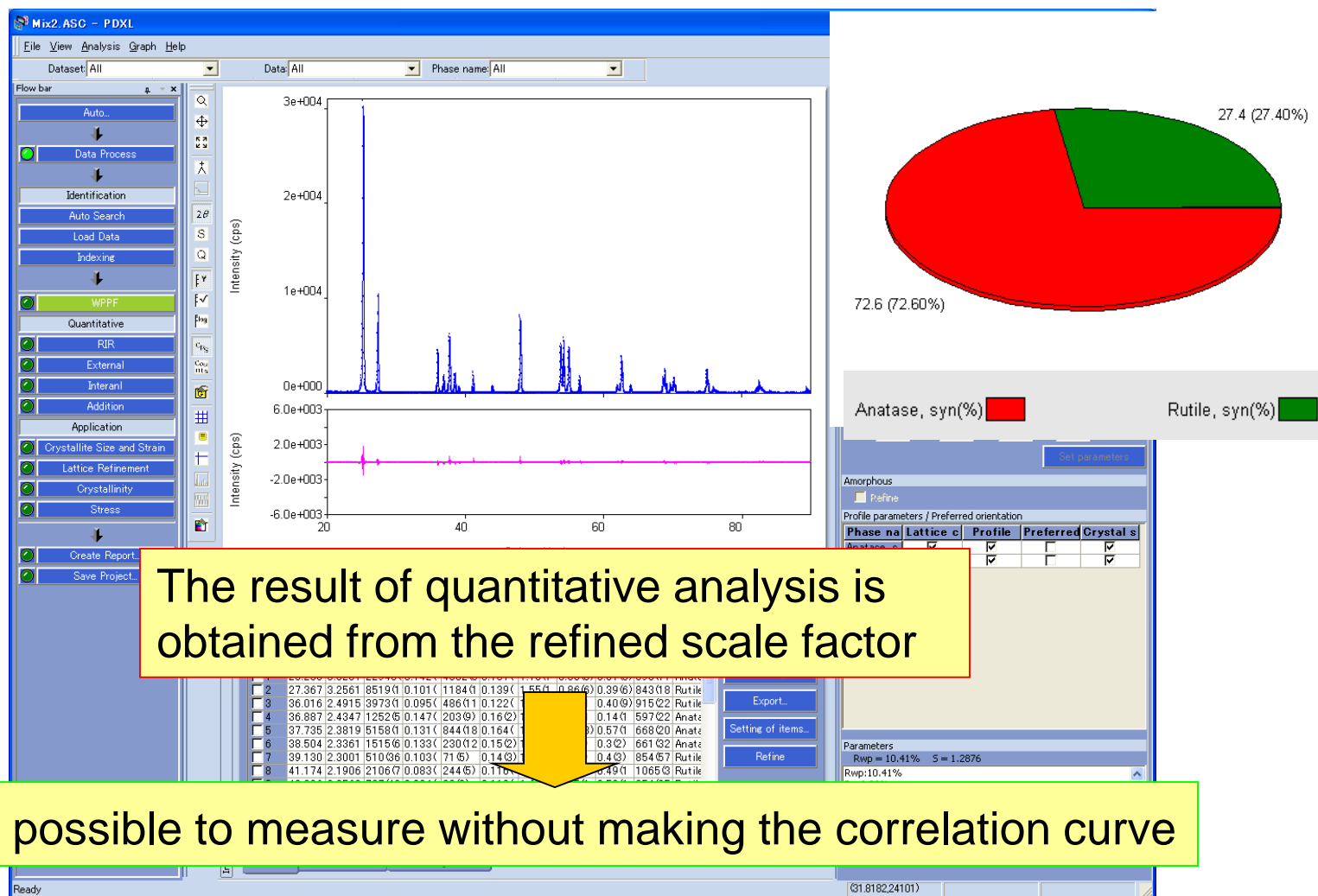
- Let's make Rietveld analysis more familiar!
 - We will offer an interface that can easily operate crystal structure parameter taken from a data base, Analytical condition setting, crystal structure display, even quantitative result display.



Example of Lattice Parameter Refinement Temperature Dependence Electrode for solid oxide type fuel cell $(\text{La}_{0.9}\text{Sr}_{0.1})\text{MnO}_3$

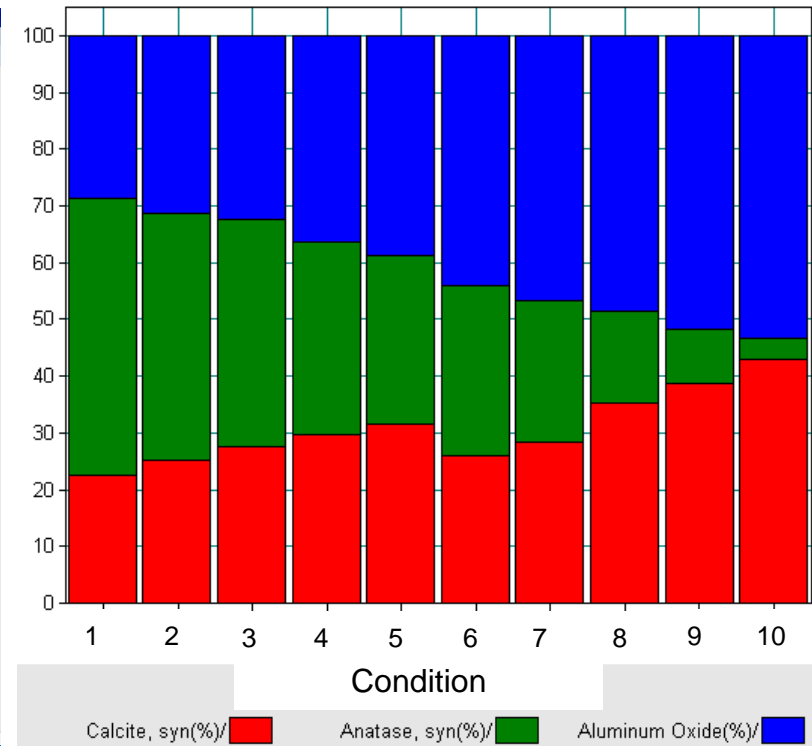
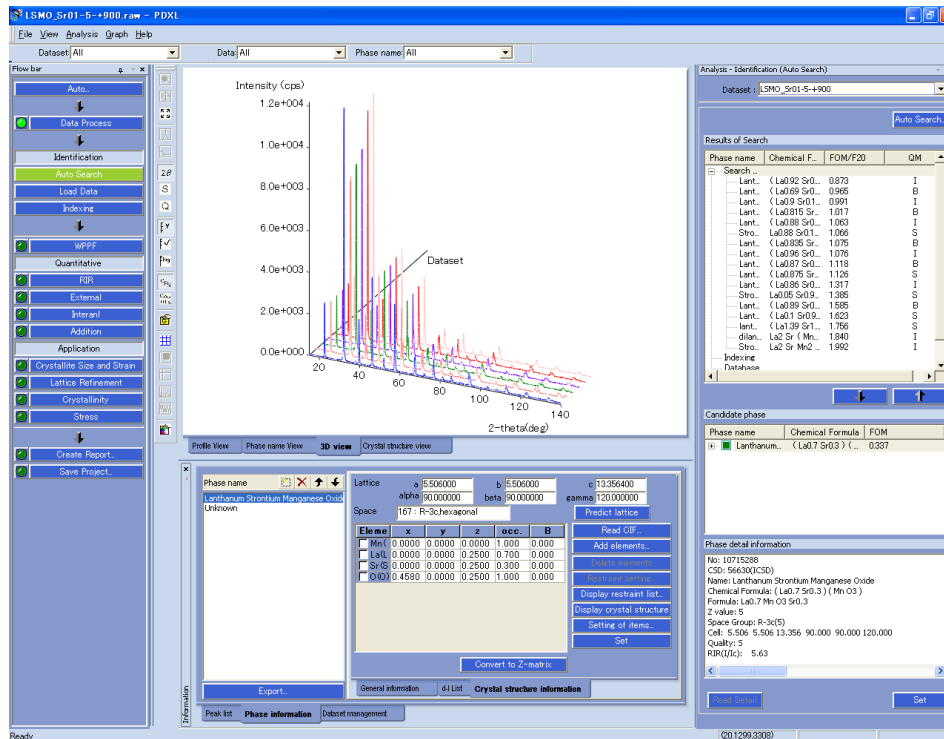


Quantitative Analysis by Using Rietveld Analysis Method



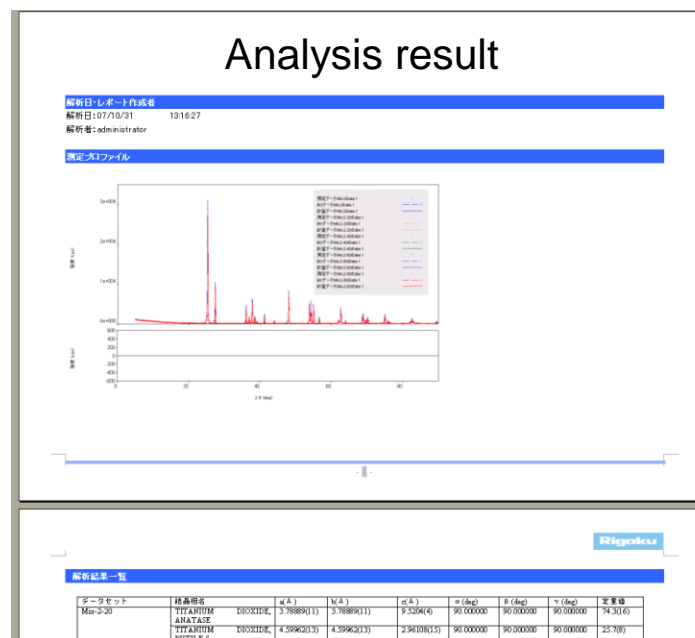
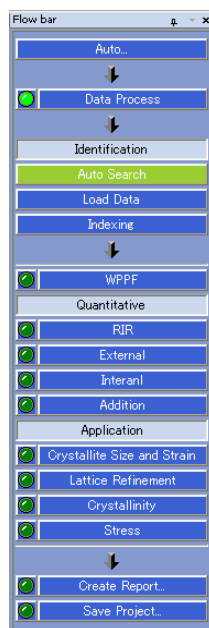
Package Processing

- Operation time is greatly shortened by an automatic analysis.
- Comparison between samples is easy according to one batch processing of a lot of data.

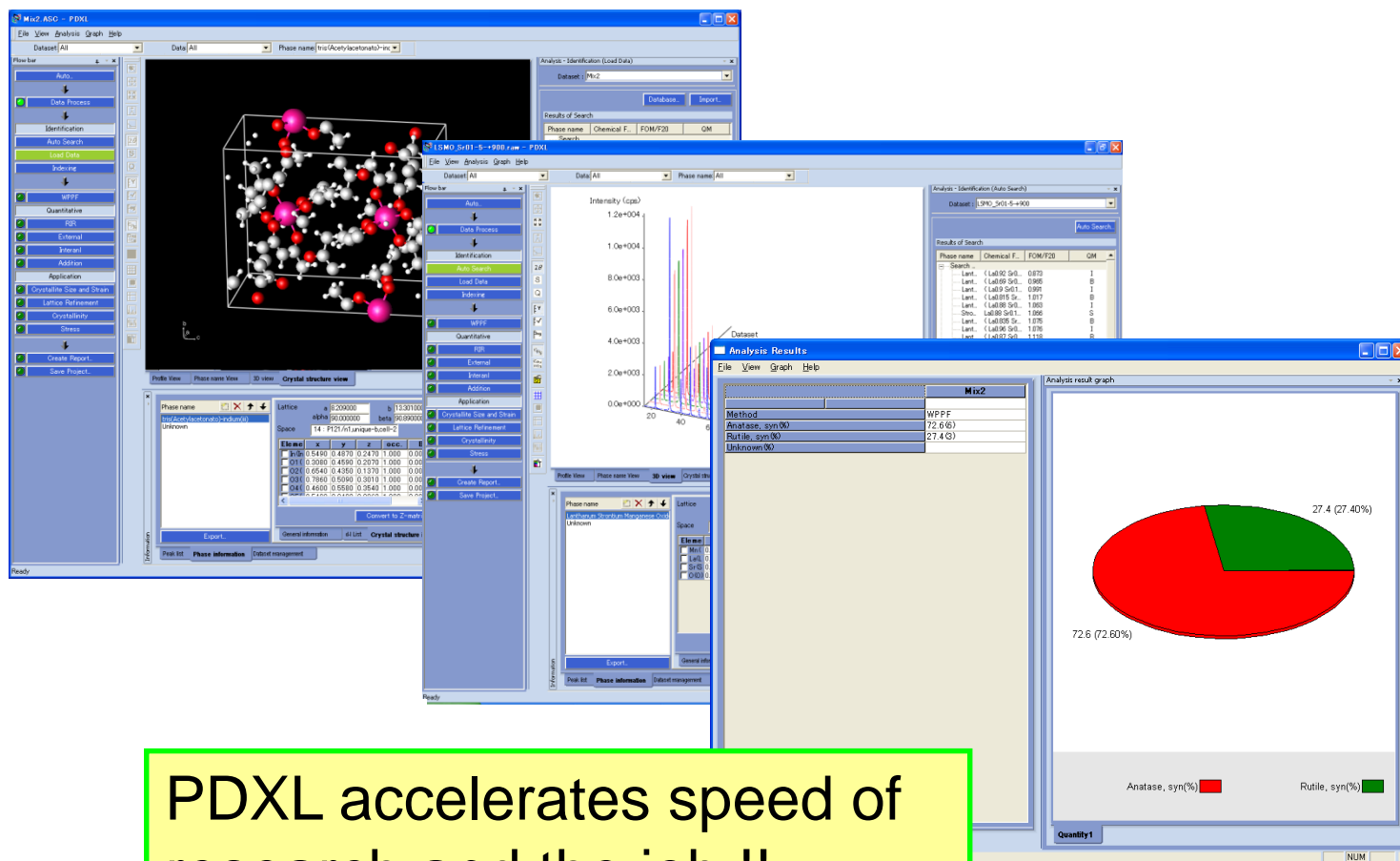


Private Report Function

- **Function of created private report improves work efficiency**
 - Doing all processes from the data analysis to the report creating and the preservation of analytical results became possible to do at one time because it had adopted the flow bar method.
 - The format of the report can be freely set.



New Powder X-ray Diffraction Profile Analysis Software is 'PDXL'



PDXL accelerates speed of research and the job !!