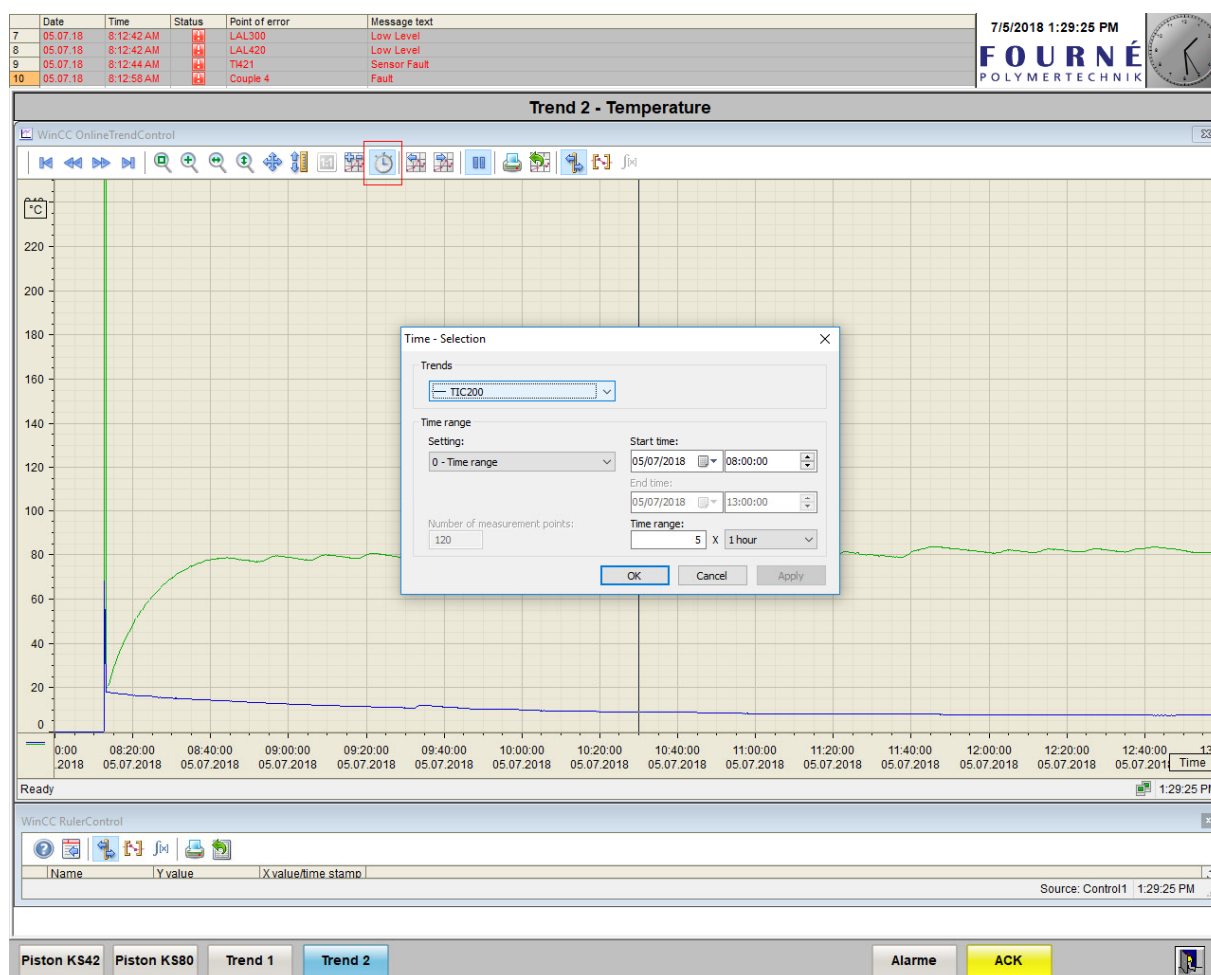


Exporting Spinning Logs from Simatic CC

The software, used to control the spinning units and their attachments, logs all the information it has access to through different sensors. This includes for example the temperatures, pressures and godet speeds.

The software interface, depending on the computer used, may have multiple different tabs. For example, the computer used to control the KS42 and KS80 spinning units, has specific tabs for the spinning units and two additional tabs for the measured information – Trend 1 and Trend 2 (See Image 1). Clicking on the tab opens that specific view.

Image 1- Trend 2 tab with Time Selection dialog open

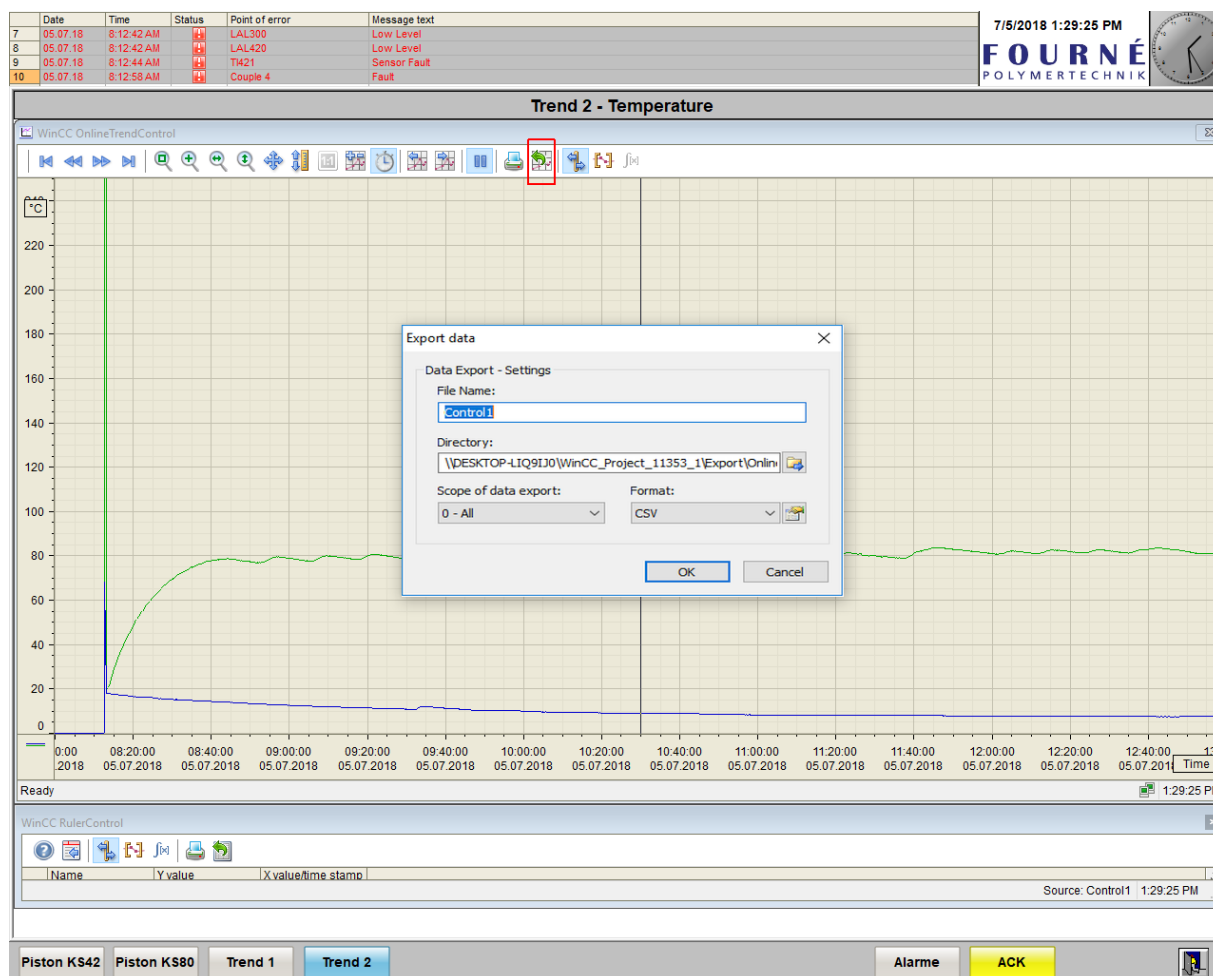


In the trend views you have a toolbar on top of the diagram. With the clock symbol you can open the *Time selection* view (See Image 1) which is used to define the timespan for the diagram.

Select the *Start time* to match the day and time when you started spinning. Match the *Time range* to the time you were spinning. Click OK and the diagram should update to match your new settings. Be aware that the settings are diagram/tab specific!

When you are satisfied with the time span, you can export the data. Clicking on the Export symbol, a green arrow over a map, (See Image 2) will open the *Export data* dialog.

Image 2- Export data dialog



The Export data function is diagram/tab specific as well and will export only the diagram data currently viewed. Use the default CSV *Format*.

Use distinguishable names for the two files, Trend1 and Trend2 for example.

Change the directory by clicking the symbol next to the directory text field. You must create new folders through Windows File Explorer in advance.

After exporting the data, you have to transfer it to yourself. Use the WinSCP software installed on the computer (See separate instructions for the software).

There is a macro-enabled excel file (***ImportSpinLogs.xlsm***) to import the spinlog data in CSV-format into a template. It assumes the first selected file is the CSV-file for *Trend 1* tab, the second from *Trend 2*, and that *the data order is specific*.